

# Flat Flood 300W & 500W

Super Flat high-powered LED Floodlight

**brightLED**  
...BRIGHTENING YOUR FUTURE



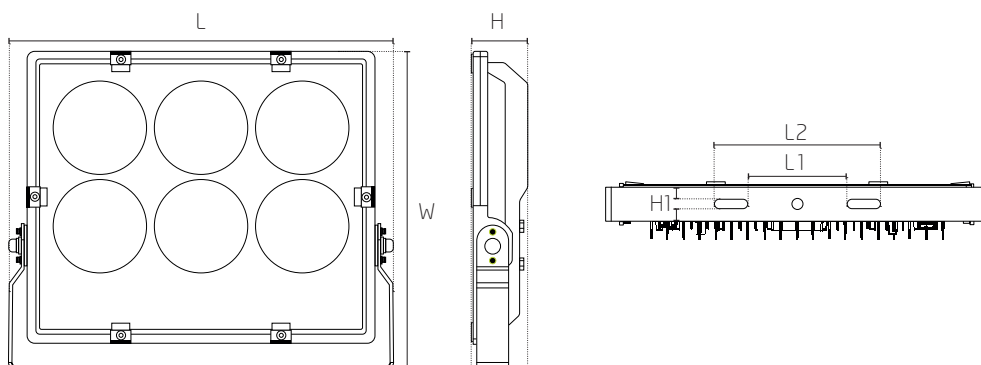
## Overview

A high-powered AC floodlight constructed as an all-aluminium structure with individually powered LED cone structures for optimum beam control. IP66 ventilated breathers prevent the build-up of condensation and a 20kV spike protection gives added robustness.

## Features

- 60° beam angle
- 4K as standard (other CCT available as special)
- IP66 ventilators to prevent condensation build-up
- 3-year product warranty
- 2m rubberised external grade flex

## Product Dimensions

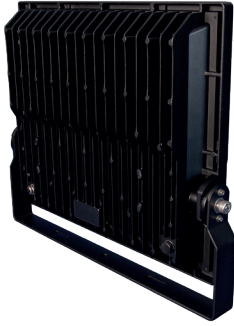


mm	300w	500w
L	475	725
W	393.7	393.7
H	70.4	70.4
L1	125	190
L2	205	270
H1	10	10



E: [office@bright-led.co.uk](mailto:office@bright-led.co.uk)  
T: 01282 505400 F: 0844 854 8662

[www.bright-led.co.uk](http://www.bright-led.co.uk)

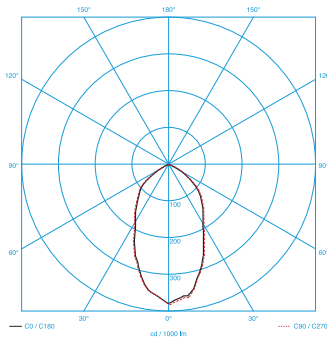


Rear view



Close up

## Photometric Performance



## Product Specification

Code	Power	Lumen Output	Weight
FLAT-300-60D-4K	300W	30,000lm	6.2kg
FLAT-500-60D-4K	500W	50,000lm	9.2kg

